

# Athena

OPT™+SHR™+ IPL™ + ND:YAG

Laser and light therapy for end-to-end aesthetic solutions

## USPs of the Device

- Multiple treatments in 1 platform
- Special tips for red, orange, brown and black pigments
- Wider area Coverage
- Multiple waveguides for wide range of applications
- Gender, Skin and Indication Specific Options Available

## TECHNICAL SPECIFICATIONS



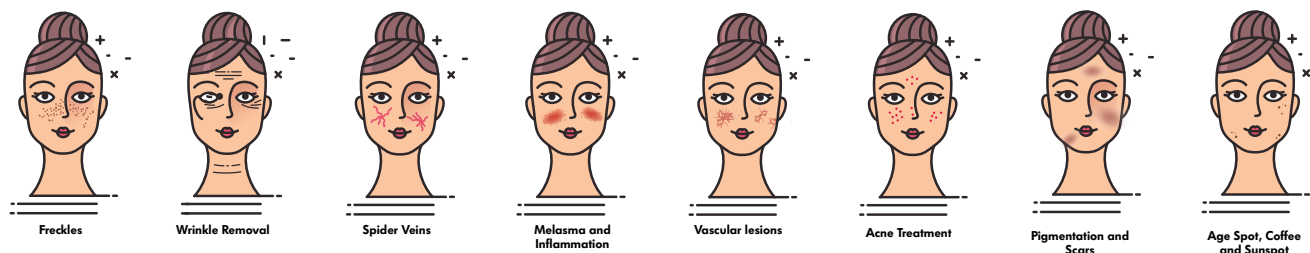
### TECHNICAL PARAMETERS

### DEVICE SPECIFICATIONS

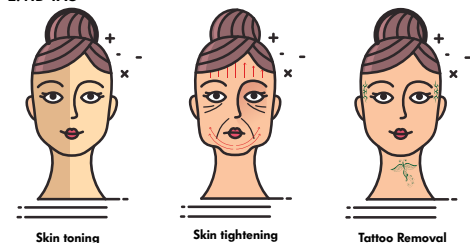
Technologies	OPT™ + SHR™ + Q-Switch + IPL
Light Sources	Q-switched Nd:YAG solid-state laser/ IPL
Handles	IPL handle + ND:YAG laser handle
Laser Wavelength	532nm/1064nm/1320 nm
IPL Filters	480-900nm   540-950nm   640-950nm
Working Modes	SHR mode/OPT model/YAG mode
IPL Spot size	15mm*50mm
Laser Spot Size	2-10 mm
Frequency	1~10 Hz
IPL Energy	IPL : 1-50 J/cm2
Laser Energy	0-1500 V
Pulse duration	8 nanosecond (ns)
Cooling Sytem	Integrated cooling system -5° C
Refrigeration System	Water+Semiconductor+Air cooling
Coolant	Well-filtered distilled or deionized water
Power Consumption	3000 VA
Rate Input Power	AC 110V/60Hz   AC220V/50Hz
Operation Capability	Supports 24 Hours of Uninterrupted Work

## Applications

### 1. IPL + OPT Modality



### 2. ND-YAG



**TriCell**  
BIOLOGICS™

