

# Tubex<sup>®</sup>

PRP/Cell Concentration System



Imported & Marketed in India by



✉ support@tricellbio.com

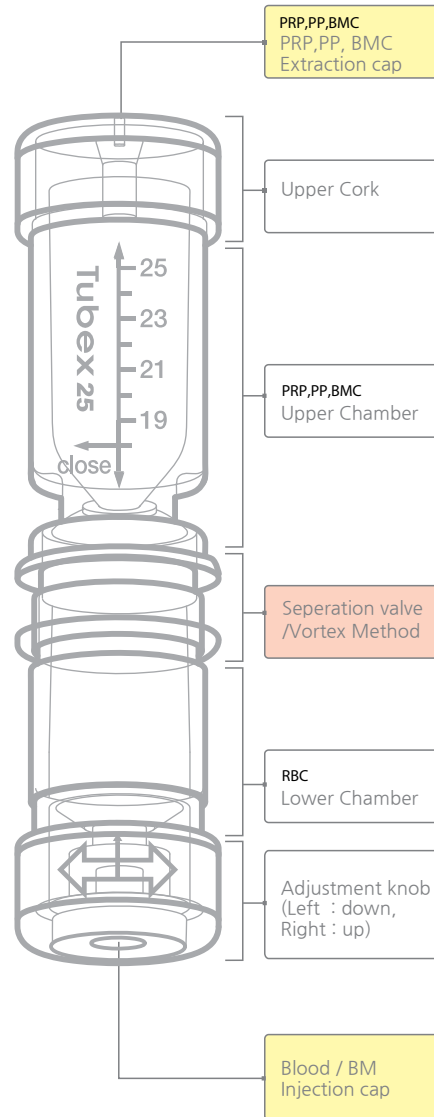
☎ +91 95000 80399

🌐 www.tricellbio.com

**Disclaimer:**

Most data presented in this brochure are based on published studies carried out in different parts of the world. Health-related information and opinions change frequently and therefore information contained in this brochure may be outdated, incomplete or incorrect. The information, statements and images provided in this brochure is for informational purposes only and should not substitute advice provided by the treating physician.

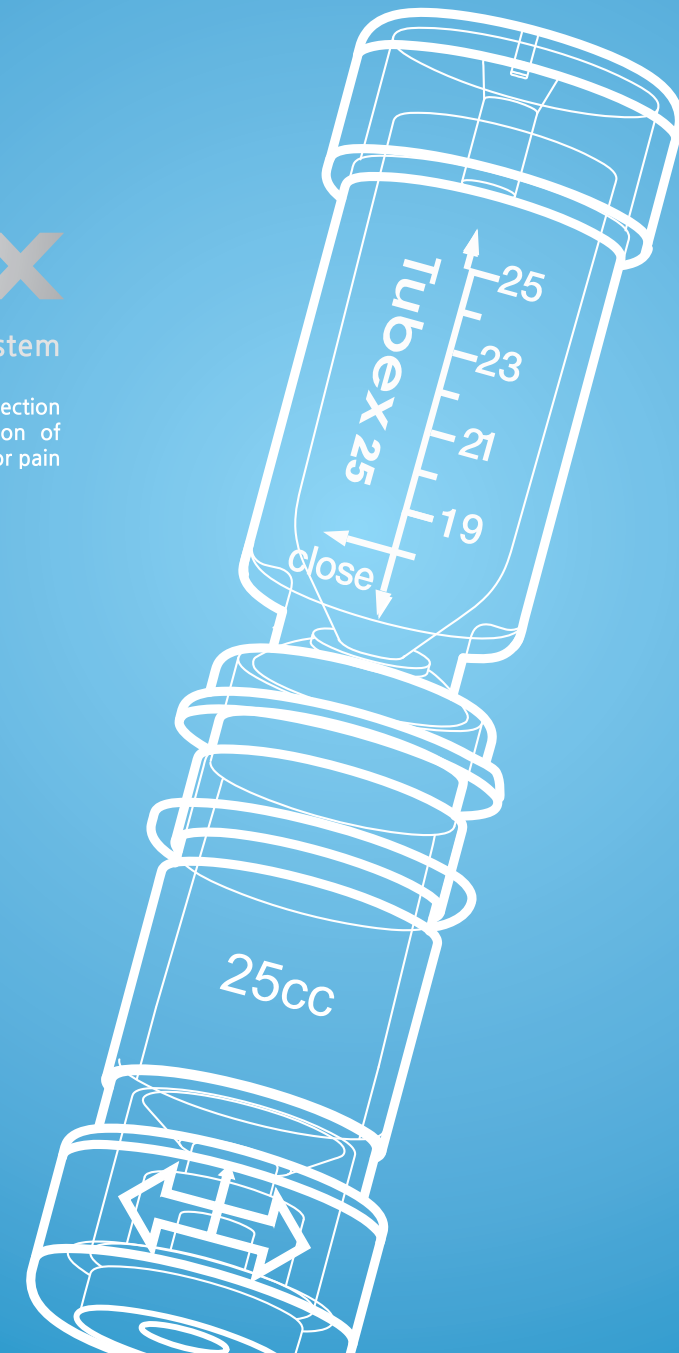
## 25cc FEATURE & FUNCTION



# Tubex<sup>®</sup>

PRP/Cell Concentration System

TUBEX is a blood/Bone marrow collection container used for selective extraction of PRP(Platelet Rich Plasma) /PPP/BMC for pain and tissue regenerative treatments.



# Tubex

PRP/Cell Concentration System

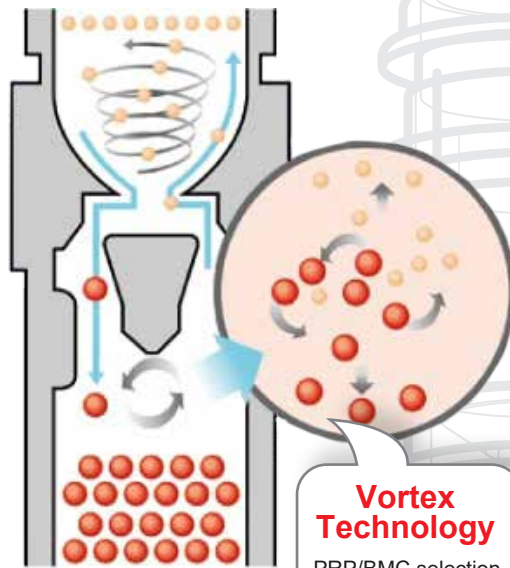


## What's Tubex?

TUBEX is a blood/Bone marrow collection container used for selective extraction of PRP(platelet rich plasma)/ PPP/ BMC for pain and tissue regenerative treatments.

## Feature & Safe

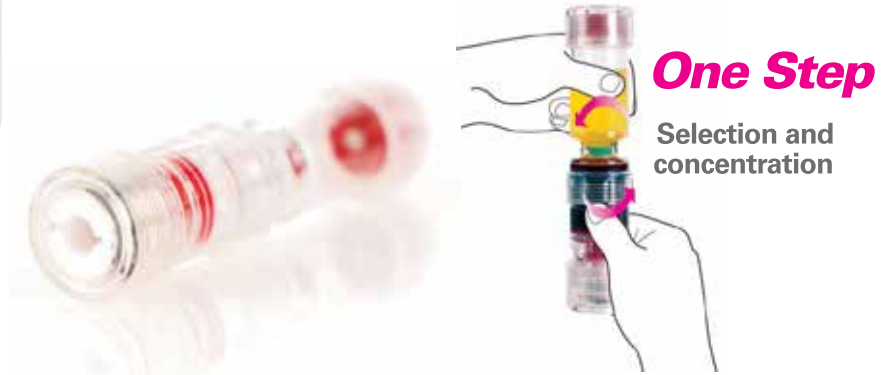
It uses medical grade plastic that is biocompatibility certified and gamma sterilized as per ISO 11137 norms.



**Vortex Technology**  
PRP/BMC selection and concentration

## What's VORTEX?

The Vortex engineering method is a unique process to minimize loss of cell/platelet during the separation process.



**One Step**

Selection and concentration

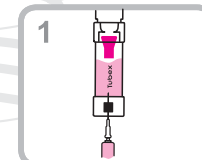
**100% Natural**  
Uses only autologous blood

**100% Volume Control**  
Flexible Volume

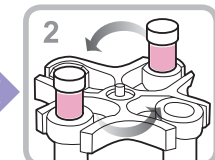
**100% Customisable**  
3 modes of customised preparation

**0% Contamination**  
Sterile Disposable

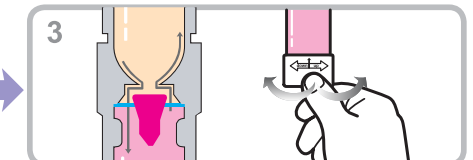
## How to use Tubex



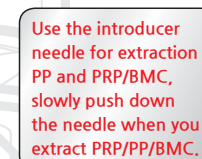
Inject blood/BM into Tubex



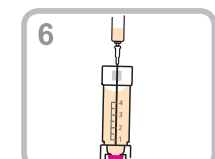
Adjust RCF value and time for 1st centrifugal separation



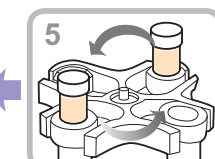
Turn the bottom cork to adjust red-blood-cell level to meet blue line (Left : down, Right : up)



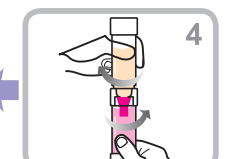
Use the introducer needle for extraction PP and PRP/BMC, slowly push down the needle when you extract PRP/PP/BMC.



Extract PP above 4mm first, and then extract PRP/BMC under 4mm



Adjust RCF value and time for 2nd centrifugal concentration



Not to mix the red-blood cell and plasma, lock the middle valve. (Hold the lower chamber and turn the upper chamber to the left side)

25cc